

## 1961

The land embraced in the annexed plat of *Ese Lake Estates No. 2*, part of *Gov't Lots 6 & 7*, *Section 32, T32N, R4E, Montmorency Township, Montmorency County, Michigan*, is described as follows:

Commencing at the 1/4 corner between Sections 31 and 32, T32N, R4E, Michigan Meridian;

Thence N 86° 59' E 845.72 ft.;  
Thence South 200.00 ft. to the Point of Beginning

Thence S 86° 59' W 279.63 ft.

Thence South 118.09 ft.;  
Thence S 86° 59' W 291.09 ft.;  
Thence South 1089.6 ft.;

Thence S 29° 11' 20" E 270.0 ft.  
Thence N 60° 48' 40" E 50.0 ft.;

Thence S 29° 11' E 66.0 ft.;  
Thence S 32° 23' E 107.78 ft.;

Thence N 89° 58' E 318.9 ft.;  
Thence N 38° 36' E 124.8 ft. also

Thence N 0° 12' W 276.1 ft. along  
Thence N 26° 27' W 124.75 ft. a

Thence N 7° 20' W 137.8 ft. along  
Thence N 10° 52' E 205.6 ft. along

Thence N 12° 58' W 244.85 ft. a

Thence N 45° 11' E 90.9 ft. along

Thence N 12° 37' W 120.9 ft. all

Thence S 86° 59' W 57.18 ft. to  
Containing Lots 52 to 80 Inclusive

Lot lines extend to the water's edge. Dimensions are in feet and decimals.

Bearings are extended from adja

**SURVEYOR'S CERTIFICATE**  
I hereby certify that the plat hereon

and that permanent metal monument  
an one-half inch in diameter and 3

bars of not less than one-half inch  
thick and not less than 6 inches with an over

5 inches, encased in a concrete cylinder and 36 inches in depth in the

and plotted, at all the intersections

and alleys with the boundaries of the

10

Prepared and  
Registered L

R. S. Scott  
Alpena, Mich

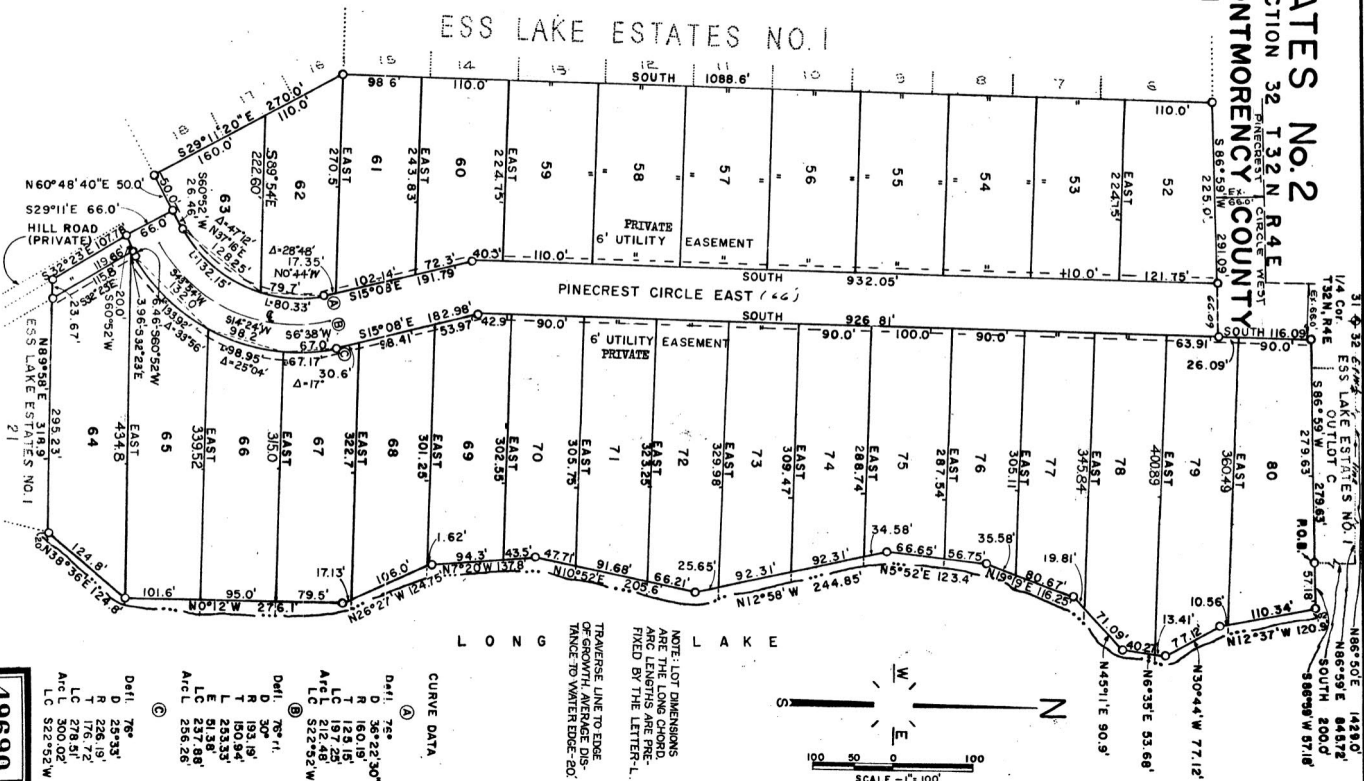
---

Lot lines extend to the water's edge, as shown. Dimensions are in feet and decimals thereof. Bearings are extended from adjacent plat.

# SURVEYOR'S CERTIFICATE

I hereby certify that the data herein delineated is a correct one and that permanent metal monuments consisting of bars not less than one-half inch in diameter and 36 inches in length, or shorter bars of solid steel, shall be placed at intervals of not more than 36 inches, measured in a concrete cylinder at least 4 inches in diameter, and 5 inches in depth have been placed at points marked thus (C) at all angles in the boundaries of the alley, and at all intersections of streets, intersections of alleys, or of streets and alleys, and at the intersections of streets and alleys with the boundaries of the plot as shown on said plat.

Prepared and drafted by James L. Scott,  
Registered Land Surveyor #8318  
R. S. Scott Engineering Co., Inc.  
Alpena, Michigan



COPY

49690

## 49650